



APPENDIX 13-1

PHOTOGRAPHIC APPENDIX

11.1 Photographic Record of Site

11.1.1 Proposed Wind Infrastructure Locations



Plate 1: General view of TI, looking NE.



Plate 2: Proposed hardstand for TI, looking W.



Plate 3: Existing track (due for upgrade) west of T1, looking E.



Plate 4: Existing track (due for upgrade) looking NE towards temporary proposed borrow pit.



Plate 5: Existing track (due for upgrade), looking SE towards T2.



Plate 6: General view of T2, looking S.



Plate 7: General view of T3 and associated hardstand and access track, looking E.



Plate 8: T3, looking E.



Plate 9: Proposed road to T4, looking S.



Plate 10: General view of T4 and hardstand, looking SSW.



Plate 11: General view of proposed met mast, looking S.



Plate 12: Proposed road to met mast, looking NW.



Plate 13: T5, looking E.



Plate 14: Site of TN029-030— redundant record, west of T5, looking NW.



Plate 15: Proposed road to T6, looking W.



Plate 16: Proposed spoil management area SE of T6, looking SW.



Plate 17: Proposed spoil management area and road to T6, looking ENE.



Plate 18: T6, looking NE.



Plate 19: General view of T7, looking SW.



Plate 20: Proposed road between T6 and T8, looking NE.



Plate 21: Proposed road between T8 and T5, looking NW.



Plate 22: General view of T8 and associated hardstand, looking NW.



Plate 23: L-70391 east of T8, looking SW.



Plate 24: Proposed road to T9 in young coniferous forestry, looking SW.



Plate 25: General view of T9 and associated hardstand in young coniferous forestry.



Plate 26: Location of rectangular crop mark, looking N.

11.1.2

Proposed Grid Connection Infrastructure Locations



Plate 27: Proposed substation site, looking NW.



Plate 28: Proposed Grid Connection underground cabling route parallel to L-70391 Local Road to east of proposed substation, looking SW.



Plate 29: Proposed Grid Connection underground cabling route along public road (L-7039), looking SE.

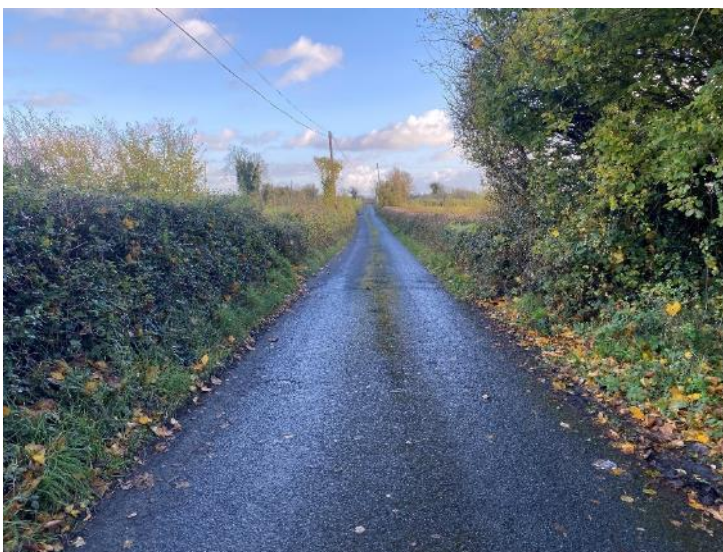


Plate 30: Bridge CH1 on proposed Grid Connection underground cabling route, looking SE.



Plate 31: Arch of road bridge CHI.



Plate 32: Proposed Grid Connection underground cabling route SE of CHI, looking NW.



Plate 33: Proposed Grid Connection underground cabling route in pasture to east of public road, looking SE.



Plate 34: Proposed Grid Connection underground cabling route in pasture, looking NE.



Plate 35: Proposed Grid Connection underground cabling route in pasture further to NE, looking NE.



Plate 36: Proposed Grid Connection underground cabling route in pasture further to NE, looking NE.